



The Farmland Harvest

The Newsletter of the Farmland Elementary PTA

August 2007

PRESIDENT'S MESSAGE

-- Deedee Jacobsohn

This is a difficult letter to start because the excitement of the first day of school is shadowed with sadness at the passing of Dr. Fineman. The school and the PTA will continue to work closely to share ideas and plans for how we can show our support for Dr. Fineman's family, and how we can honor her memory.

We welcome Mrs. Samm, acting principal, to the Farmland community. With Mrs. Samm and Diane Smith, assistant principal, at the helm, Farmland will have another wonderful year.

So, it's the start of the 2007-2008 school year! The Farmland PTA plays an active role at the school to enrich our children's experience, provide parents with tools and information to help their children succeed, and support the teachers and staff. Whenever you have any questions, concerns or ideas to share, please contact me. My phone number is 301-230-1774 and my email is <deedee@jacobsohn.org.>

The PTA meets monthly to provide updates on programs, hear the Principal's report, and discuss child-related issues that have been raised in the school or the larger community. Sometimes we invite speakers to present programs on issues of importance to the community. The meeting is traditionally the first Tuesday of every month, unless otherwise noted. Please look inside for the schedule of meetings for the year.

Our first meeting will be during Back to School night on **Wednesday September 5**, from 7:15-8pm (in between the sessions for grades K-2 and 3-5). We will briefly introduce the executive board and highlight upcoming programs; we will then turn the meeting over to Mrs. Samm so that she has an opportunity to introduce herself to the school.

The Harvest is the monthly newsletter of the PTA. Starting in September, it will be distributed the week after the PTA meeting. Notices about programs, events, and other PTA activities are included in the Harvest and sometimes sent home as separate flyers. Check your child's backpack often!

You can also receive information by **email**. To sign up, send an email to <farmlandpta-subscribe@yahoo.com> and put your name in the subject line. You can also find a lot of information on the **PTA website**, <<http://www.farmland-pta.org/>>.

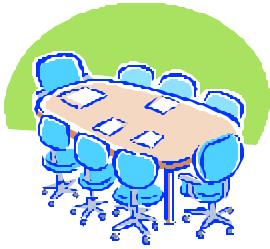
Another way to stay in touch is through the school directory, provided to all families by the PTA. The directory is published in the fall. Look for forms and waivers that will be sent home with your children to be sure your information is correct.

The PTA sponsors a wide variety of programs, from chess club, class piano, Mad Science, the literary magazine, foreign language classes (FLES), and the science fair to the many cultural arts performances scheduled during the school year. There are social events like the fall festival, welcome activities through Farmland Friends, International Night, and potluck dinners. We also support the artist in residence program, the choral and opera programs, the homework club and other school activities. Annual gifts to the school enrich the environment; last year we gave recess equipment, the butterfly garden, a book storage cart, a button maker, and a new die-cut machine and shapes for teachers to use for their classrooms and bulletin boards.

All of these things are possible only with the dedication of our many volunteers and the financial support of the Farmland community. Please participate in the PTA—it is as easy to volunteer your time, as it is to support our fundraisers. The list of committee chairs is on the website; when you find something that interests you, contact the committee chair to offer your help. Volunteer forms for specific events and activities will be sent home throughout the year. Volunteer and help make this year another big success for the PTA and the school!

I look forward to serving as your president this year, and I hope to see you all at the PTA meeting on **Wednesday September 5** at 7:15 pm.





PTA MEETINGS SCHEDULE

All of the PTA meetings start at 7pm in the APR unless otherwise noted.

Wed. Sept. 5 (7:15pm)

Mon. Sept. 10 (Media Center)

Tues. Oct. 2

Tues. Nov. 6

Mon. Dec. 3

Tues. Feb. 5

Tues. March 4

Tues. April 1

Tues. May 6

Tues. June 3



SPECIAL PTA MEETING MONDAY, SEPT. 10TH

Please join us on **Monday September 10** for a special PTA meeting about the

budget. The budget will be discussed and approved at this meeting. We must have a quorum, so please come! If you are a committee chair, we strongly recommend that you attend to learn what your budget is and how to get reimbursed for expenses. We welcome all PTA members (you can join at the meeting if you have not already) who are interested in learning where the money comes from and where it goes. This meeting will start at 7pm in the Media Center. We look forward to seeing you there!

FARMLAND GIRLS ON THE RUN (GOTR)

If your 3rd, 4th, or 5th grade daughter is interested in training for a 5K fun run through a curriculum that is fun, promotes friendship, self-esteem, and character development, then consider signing her up for the twice a week extra-curricular Girls on the Run (GOTR) program. The GOTR program will meet on

Wednesdays and Fridays from 3:45pm-5pm beginning on **September 19** and finishing the week of November 12 with the 5K fun run scheduled for **November 17**. **Online sign ups** are on a first come basis at www.girlsontherunofmoco.org **beginning on September 4, 2007**. A maximum of 15 girls will be accepted, but there will be a wait list (and if we have an overwhelming response, we can consider forming a second GOTR group). The **\$150 fee** (scholarships are available) covers program costs, snacks, t-shirt, water bottle, and the 5K fun run entrance fee. We extend a huge thank you to Angie Bosse and Heather Hochberg who are the head coaches and Nadine Findeisen who is one of the assistant coaches for this exciting program. We also have some fabulous teachers including Mary Wang, Ashley Weissenburger, Traci Matturro, and Diane Smith who expressed interest in coaching and running with the girls! For questions, please contact Cheryl Morris at cgmorris@att.net. To learn more about *Girls on the Run* go to www.girlsontherun.org.

THE MISSION OF THE PTA

The mission of the PTA is threefold:

- ❖ To support and speak on behalf of children and youth in our schools, in our community and before governmental agencies and other organizations that make decisions affecting children
- ❖ To assist parents in developing the skills they need to raise and protect their children
- ❖ To encourage parent and public involvement in the public schools of this county

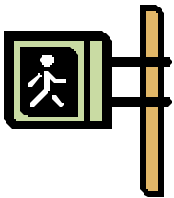
*As taken from the Montgomery County
Council of PTAs Handbook*

CHINESE, FRENCH, AND SPANISH CLASSES

The Farmland PTA is again sponsoring Chinese (Mandarin), French, and Spanish classes through the Foreign Language in Elementary Schools program (FLES).

- Introductory classes for Kindergarten and 1st Grade
- Levels I, II, and III classes for Grades 2, 3, 4, and 5

The FLES program is a great learning experience and emphasizes conversation and fun. *See the attached registration form for more information.*



WALK TO SCHOOL DAY

International Walk to School Day will be on **Wednesday, October 3**. Mark your calendars. Plan your route ahead of time to arrive at school by 9:00 a.m.

Parents and caregivers are strongly encouraged to walk with their children all the way to school.

Please leave your pets at home on this day, as many children are afraid of or intimidated by dogs. For information, contact **Carol Lange** at 301-984-2902 or **Stacey Jungreis** at 301-881-8862.

ADVERTISE IN THE DIRECTORY

The Farmland Student School Directory is a solid source for advertising. The directory is commonly placed next to family phones for frequent—if not daily—use, making it a great way to market your services or products to the 400 families in our school community. If you are interested in placing an advertisement in the Farmland Student Directory for the 2007-2008 school year, please contact **Melissa Keller** at 301-881-2837 or email <mskeller2000@verizon.net>. All information must be submitted by **September 20, 2007**.



BROUGHT TO YOU BY:

The Farmland Harvest is the monthly newsletter of The Farmland Elementary School PTA.

Farmland Elementary School
7000 Old Gate Road
Rockville, MD20852
301-230-5919

PTA President: Deedee Jacobsohn
Principal: Mrs. Samm (Acting)
Harvest Editor: Ruth Malloy

You can find more information about the PTA on our website (www.farmland-pta.org) or by joining our listserv (farmlandpta-subscribe@yahoogroups.com.)

For Harvest submissions please send them via email to ruthieftm@aol.com

Find the PTA online at:
<http://www.farmland-pta.org/>

CLASS PIANO AT FARMLAND ELEMENTARY



To: Parents of children in grades 2 through 5

Thanks to the cooperation and support of our elementary school, our PTA is again sponsoring **Class Piano** lessons. This nonprofit program has used the group method in this county for 50 years. Students meet once a week before school for 60 minutes. Our classes are held from 8-9 a.m. on Monday – Friday with class size varying depending on a student’s age, interest, work habits and musical ability. Classes are generally taught in groups of 5 to 10 students, making lessons available at a low cost and providing a competitive stimulus that typically motivates them toward greater achievement. During the lesson, each child takes turns at the pianos while classmates play on electronic keyboards. Note reading, theory, ear training, harmony and sight-reading are stressed. Our teacher is Jean Lauderdale, 301-656-9029, jeandl@starpower.net

TUITION, which is always substantially less than private lessons, is determined by enrollment. The fee for at least 30 lessons should be about \$300, which includes all music books, a music bag and recitals (only \$10 a lesson). **A tuned piano or full size electronic keyboard must be available at home for daily practice.** Parents are encouraged to attend the lessons.

A NON-REFUNDABLE \$75.00 REGISTRATION FEE, WHICH IS APPLIED TO YOUR TUITION, IS DUE WITH YOUR RETURN OF THE FORM BELOW. This fee is used for administrative fees, to purchase class materials and pay for room rental. Please make your check payable to Farmland Class Piano and return it, along with a completed registration form, to the school office in a sealed envelope marked “Farmland Class Piano” by Wednesday, September 12. Classes will begin on Monday, September 17. Please note that throughout the year, lessons will be held at the regularly scheduled time on all Teacher Professional Days.

An informational meeting will be held on **Wednesday, Sept. 5, at 3:45 p.m.** in the Media Center. Or call Gabrielle Roth, Farmland Class Piano Chair, with any questions at 301-468-0318. You will be notified of your child’s class time and the amount of tuition prior to the first class. Parents who wish to enroll students who have had piano before, **but not in the Farmland Class Piano Program**, should bring their child to the meeting for an audition and placement.

REGISTRATION FOR 2006-2007 FARMLAND CLASS PIANO PLEASE WRITE INFORMATION BELOW *NEATLY*

Student _____ Grade _____ Teacher _____

Address _____

Parent’s Name _____

Home Phone _____ Work Phone _____ E-mail _____

Is there any day that this student would not be able to participate _____

Has this student had piano lessons before at Farmland? _____ elsewhere? _____ #of years: _____

Please enroll my child in class piano. We have a piano in our home. I am enclosing a check payable to Farmland Class Piano for my non-refundable \$75.00 registration fee and understand that full tuition is due immediately upon notification of the tuition amount.

Parent’s Signature _____

Farmland's Foreign Language Program – CHINESE, FRENCH & SPANISH

This form is for students who wish to participate in the PTA-sponsored program called Foreign Language in Elementary Schools (FLES). Class sizes are small, and the price is economical. Classes are offered at the following levels:

CHINESE, FRENCH & SPANISH-INTRODUCTORY LEVEL FOR KINDERGARTEN & GRADE 1:

Classes begin the 3rd week of October and end in March. The cost is \$190 for 20 lessons. Classes meet once a week for 45 minutes of fun learning & age-appropriate activities. Classes are scheduled as follows but are subject to change:

INTRO CHINESE Tuesday 3:35-4:30 PM (includes 15 minutes for afternoon snack)

INTRO FRENCH Tuesday 3:35-4:30 PM (includes 15 minutes for afternoon snack)

INTRO SPANISH Monday 8:15-9:00 AM

FRENCH & SPANISH— Levels I, II, and III: Grades 2-5

Classes begin the 3rd week of October and end in May. The cost is \$195 for 28 lessons. Classes meet once a week for 55 minutes of fun learning. Classes are scheduled as follows but are subject to change:

FRENCH I Tuesday 8:05-9:00 AM

FRENCH II/III* Monday 8:05-9:00 AM

SPANISH I Thursday 8:05-9:00 AM

SPANISH II** Monday 8:05-9:00 AM

SPANISH III** Tuesday 8:05-9:00 AM

* French II and III are combined because of projected enrollment. This has been done successfully for many years. **If there is insufficient enrollment for Spanish III, the Level II and III will be combined and classes will meet at the regularly scheduled time on Monday from 8:05 to 9:10 am.

CHINESE (MANDARIN) EXTENDED FLES--Levels I & III: Grades 2-5 (3 HOURS/WEEK)

CHINESE I Tuesday AND Wednesday 3:35-5:00 PM (including 15 min. for snack)

CHINESE III (Advanced) Monday AND Tuesday 3:35-5:00 PM (including 15 min. for snack)

Please register using the form below. All registrations must be accompanied by a check payable to "Farmland PTA" with the child/children's name(s) on the check and placed in an envelope marked FLES. Place the envelope in the PTA mailbox in the school office. The tuition fee is non-refundable. The registration deadline is Friday, September 14. If you have questions, please contact the PTA FLES Coordinator: CHINESE: Manette Niu, 301-294-7584, mtniu2@hotmail.com; FRENCH: Cynthia Angell, 301-770-7047, cynthia.angell@mindspring.com; SPANISH: Magda Ochoa, msochoa@yahoo.com.

Farmland PTA FLES Registration Form, 2007-8

You may use one form for more than one child in the family. Please indicate which level (Introductory, I, II or III) and which language you are requesting for your children on the line titled "Class Requested." You will be notified of the class start date and classroom number. Parent's Name: _____ Email: _____
Address: _____ Emergency Phone: _____

Child: _____ Grade/Teacher: _____ Class Requested: _____ Amount
enclosed: \$ _____

GIRLS ON THE RUN IS COMING TO RUN Farmland



WHAT: *Girls on the Run* is a nationwide, not-for-profit after school program that combines training for a 5K running event with self-esteem enhancing and uplifting workouts.

WHO: Girls in grades 3-5 will be able to register on-line beginning 09/04/07 at www.girlsontherunofmoco.org. Sign-ups are on a first come basis. A maximum of 15 girls will be accepted but there will be a wait list.

WHEN: The program will be offered from September 17 to November 16 on Wednesday and Friday afternoons from 3:45-5:00pm. The 5K fun run event will be on November 17.

COST: \$150 covers program costs, snacks, program t-shirt, race t-shirt, and 5K fun run entrance fee. Scholarships are available.

QUESTIONS? Please refer questions to Cheryl Morris at (301) 984-2101 or at cgmorris@att.net. Please visit www.girlsontherun.org to find out more about this outstanding extracurricular program.



Farmland Book Fair
(Wednesday Oct. 24th – Friday October 26th)

The Scholastic Book Fair, sponsored by the PTA, will be held in the GYM **Wednesday October 24th through Friday October 26th**. We need parent volunteers to help not only during the actual hours of the book fair, but we're also looking for parents who'd like to help plan the book fair. Volunteers are needed for planning events such as the teacher preview, teacher read night, poster contest, candy contest and One For Books. **You don't have to be available during school hours to help.**

Please mark you calendars now and plan to attend the Book Fair! If you are interested in helping to plan the Book Fair, please indicate your volunteer interests on the enclosed form and send it in to the PTA Box in the Office. This is a great event for all the kids and a wonderful way to bring the gift of reading to your children.

We will be sending out a separate form to sign up to work during the book fair.

If you have any questions, please contact Lisa Tillman (301-301-984-3818.; Lisa.Tillman@comcast.net); Jen Oppenheim (301-984-8024; jenoppenheim@aol.com) or Karin Wulf (Kawulf@wm.edu)

Thank you,
The Book Fair Committee

Name _____

Phone # _____

Email _____

Please indicate how you'd like to help with the book fair:

- _____Decorations
- _____Poster Contest
- _____Candy Contest
- _____One For Books/Partnership In Reading
- _____Teacher Read Night
- _____Teacher Tea/Preview
- _____I'd like to help, let me know what I can do.